

Science and environment facilities



Brand new teaching laboratories

You will be working in up-to-the-minute lecture theatres and teaching laboratories, including specialist labs in the Darwin Building. This new £7m development includes a dedicated microbiology lab, a forensics lab and a large climate controlled chamber. These new facilities are cementing the University's status as one of the best learning environments in the UK.

First class facilities

Constant investment in facilities has seen the opening of brand new science labs, Halls of Residence and an art studio. Our new Library and History Centre, opening in 2012, will be the first of its kind in Britain.

Video has been removed for this PDF but can be viewed here: http://www.youtube.com/v/yI2UYgOhTKw?fs=1&hl=en_US

Field and laboratory equipment

Your studies will be supported with a range of specialist resources, including: flow meters, water quality testing kits, microscopes, plant growth facilities, DNA analysis equipment, laboratory ovens and soil testing equipment. Two of our teaching laboratories have recently been refurbished and now include benching suitable for students with impaired mobility.

Mapping

You will also benefit from our GIS, Visualization and Mapping Suite, which provides access to high-end computers, industry-standard software and a surveygrade Global Positioning System (GPS) mapping unit.

Forensics

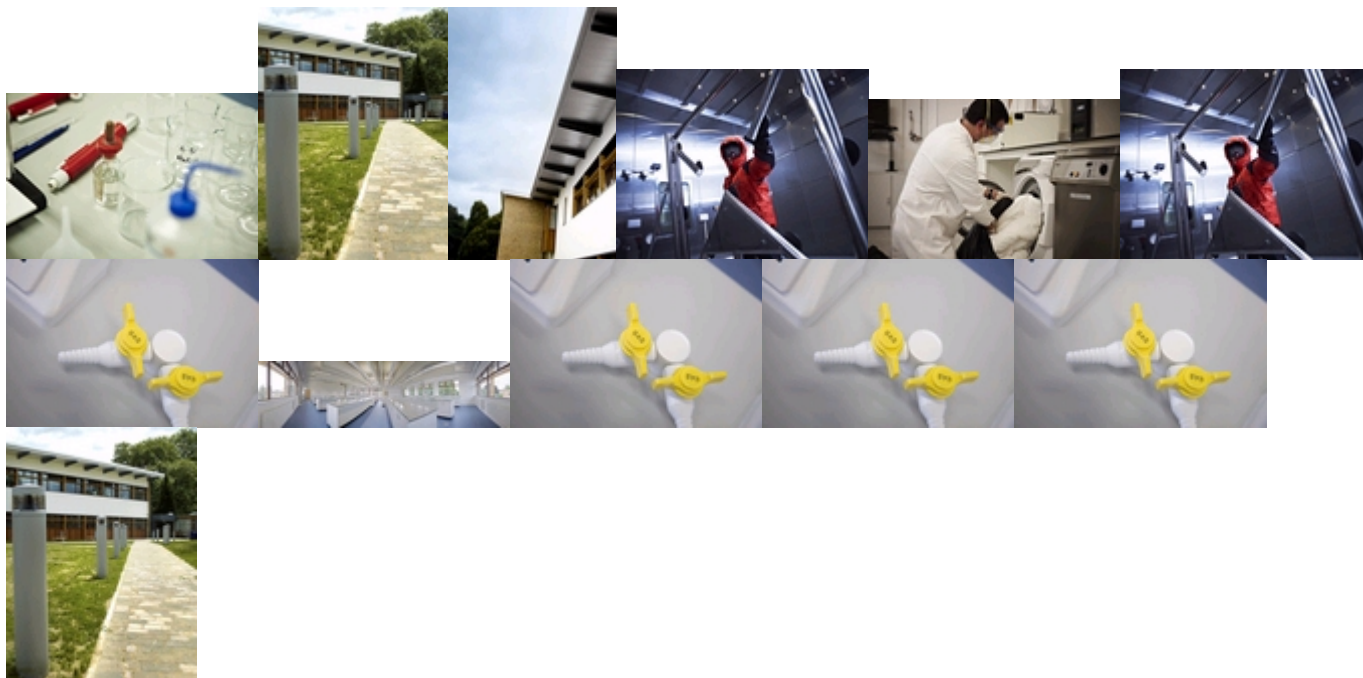
Forensic biology students benefit from a crime scene house and garden in which we can now simulate a wide variety of domestic scenes. These facilities compliment our specialist equipment and staff resources, allowing us to make the course even more realistic, relevant and exciting for our students.

Area of natural interest

Our facilities are complemented by our natural surroundings. Worcestershire is an ideal location for scientific study. It is full of green spaces, including the nearby Malvern Hills, which are designated a Site of Special Scientific Interest. The Wye River valley, the Forest of Dean and the Cotswolds are all within easy reach – whether for a relaxing day out or to use as areas of study.

To help you get the best out of the region, you can access our database of geological sites within the region, as well as an extensive archive of geological memoirs, maps and journals.

Science Facilities



© University of Worcester Henwick Grove, WR2 6AJ Tel: 01905 855000 - Last reviewed: Thursday, 24 May 2012

Page can be found:

[Home](#) / [Discover Worcester](#) / [Academic departments](#) / [Institute of Science and the Environment](#) / [About the Institute](#) / Science and environment facilities

<http://www.worcester.ac.uk/discover/science-facilities.html>